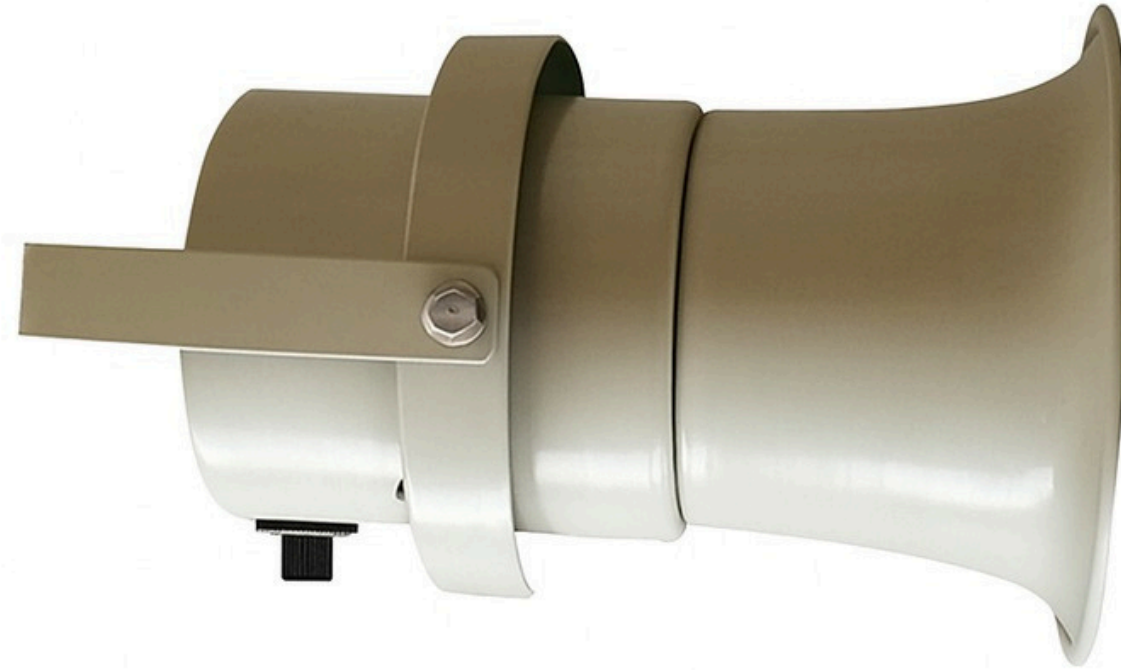


LS 1406 EXTERNAL TYPE SPEAKER



TECHNICAL SPECIFICATIONS

Operating Voltage	100VDC
Nominal Voltage	100V Line (with line transformer)
Current Consumption	-
Rated Power	100W RMS
Sound Pressure Level	115 dB (1 kHz reference signal)
Impedance	-
Frequency Range	180Hz. - 10kHz.
Magnet Type	Neodimyum Magnet
Connection Type	-
Special Features	Aluminum horn structure resistant to water, moisture, corrosion, dust, vibration and impact
Housing Color	Black
Cable Length	1m
Mounting Type	Mounting brackets compatible with various applications
Length	230mm
Width	174mm
Height	174mm
Weight	4.400gr
Protection Rating	IP65
Approvals / Certifications	SAE J1849, EVS1, EVS2, EVS3, IP65, Acoustic Performance Test
Operating Temperature	-40 °C ~ 65 °C
Warranty Period	2 years
Applications	Military and defense industry applications for marine, land and special platforms

ADVANTAGES

- Durable stainless steel and aluminum structure for harsh environments
- High resistance to water, moisture, corrosion, dust, vibration and impact
- Designed for communication, intercom, electronic alarm and announcement systems
- Long-distance sound transmission capability
- Continuous operation in land and marine environments
- Compliance with military standards
- Fast and flexible mounting adaptation
- Wide integration with 100V line transformer systems
- Reliable long-term performance with 2-year warranty

