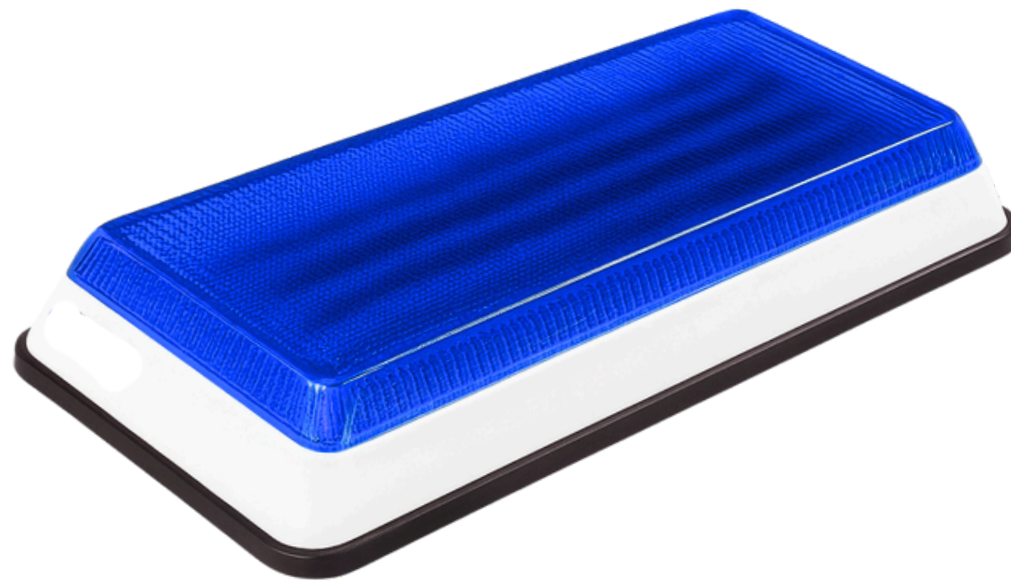




WSM 31100 RECTANGULAR WARNING LAMP



TECHNICAL SPECIFICATIONS

Operating Voltage	10VDC - 30VDC
Nominal Voltage	12VDC / 24VDC
Current Consumption	0.3 - 0.7A
Dome Color	
LED Color	
Lens Color	Clear, colorless
Flash Frequency	1 - 20Hz.
Number of Flash Patterns	Multiple synchronized flash patterns with ZER products
Synchronization	Compatible synchronization with ZER products
Special Features	UV-resistant polycarbonate housing
Interface	Control via ZER products
Cable Length	100mm
Mounting Type	Body mounting
Length	233mm
Width	115mm
Height	37mm
Weight	305gr
Protection Rating	IP65
Approvals / Certifications	ECE R65, IP65
LED Lifetime	50,000 hours
Operating Temperature	-40 °C ~ 65 °C
Warranty Period	2 years
Applications	Ambulance, Fire Brigade, Airport, Service Vehicles, Tow Trucks

ADVANTAGES

- Durable polycarbonate housing resistant to UV rays and environmental conditions
- Exceptional brightness with high-power LEDs and Fresnel lens
- Synchronizable flash patterns with ZER products
- Low current consumption protects battery
- Lightweight design
- Wide compatibility with emergency and service vehicles
- Broad color options
- Compliance with IP65, ECE R65 standards
- 50,000-hour LED lifetime
- 2-year warranty

